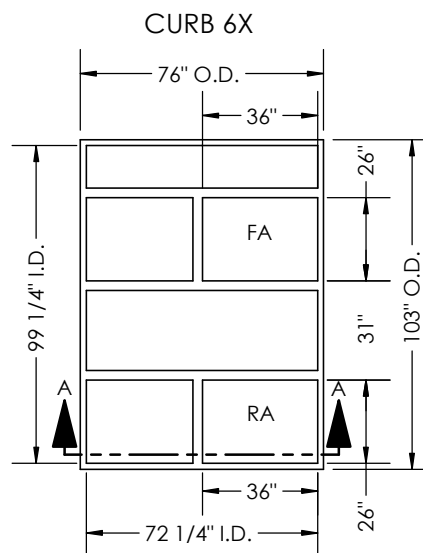
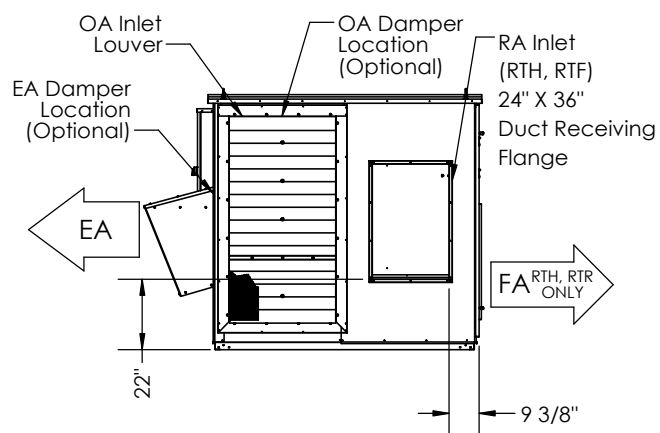


TOP VIEW

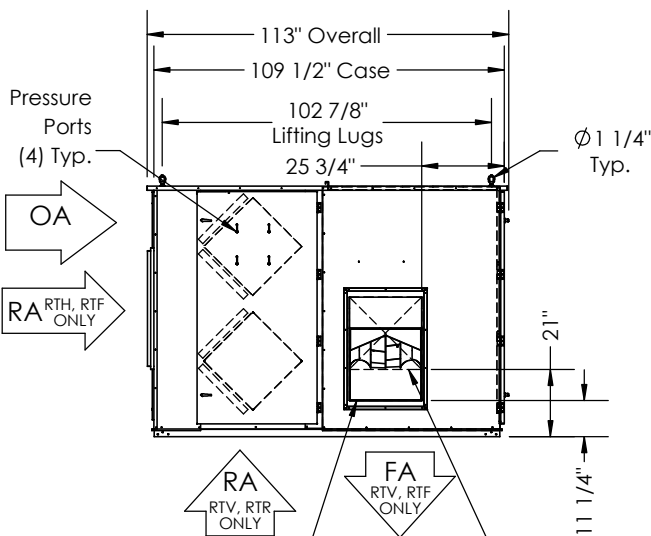


TOP VIEW

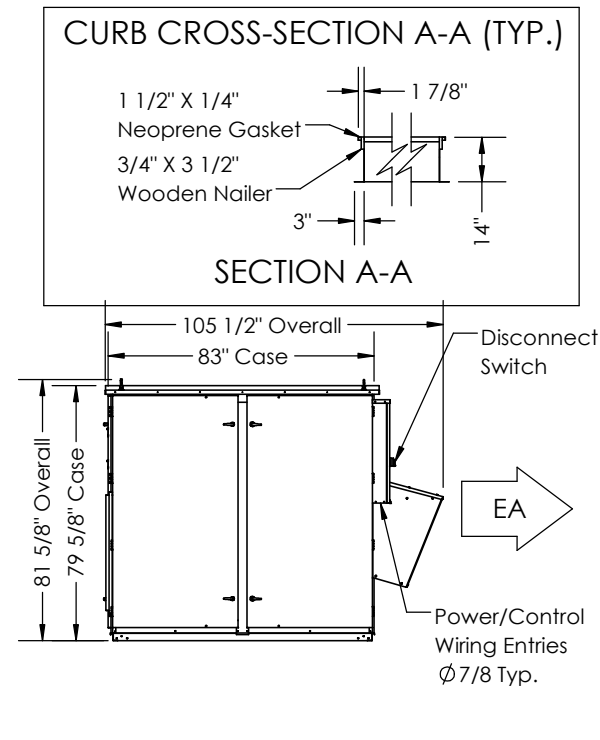


LEFT VIEW

FA Blower Outlet is 22 5/8"x32 3/8". Blower can be flipped in opening. 24"x36" Duct Receiving Flange is also supplied. Field install only in location shown.



FRONT VIEW



RIGHT VIEW

OUTDOOR UNITS: EA BLOWER Outlet is 22 5/8" x 22 5/8". Blower can't be flipped under EA hood.

ABBREVIATIONS

EA: Exhaust Air to outside
 OA: Outside Air intake
 RA: Room Air to be exhausted
 FA: Fresh Air to inside
 RTV: Rooftop Vertical RA & FA
 RTF: Rooftop Vertical FA Only
 RTR: Rooftop Vertical RA Only
 RTH: Rooftop Horizontal RA & FA

INSTALLATION ORIENTATION

Unit must be installed in orientation shown.

NOTE:

1. UNLESS OTHERWISE SPECIFIED, DIMENSIONS ARE ROUNDED TO THE NEAREST EIGHTH OF AN INCH.

2. SPECIFICATIONS MAY BE SUBJECT TO CHANGE WITHOUT NOTICE.