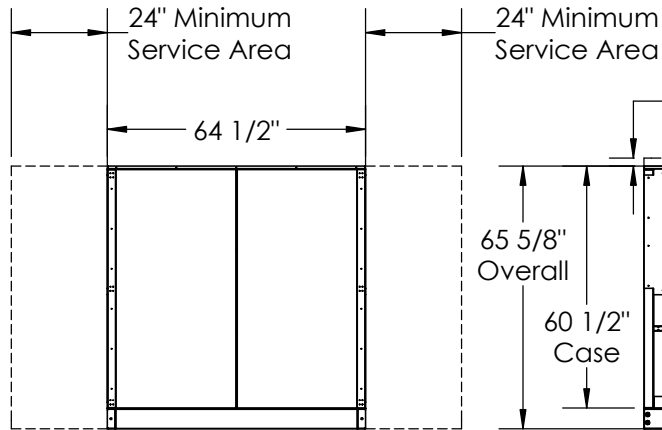
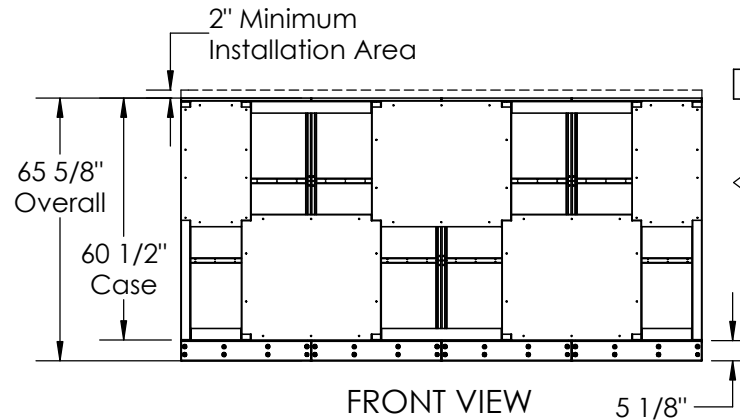


TOP VIEW



LEFT VIEW



FRONT VIEW

- 1 = OA: Outside Air intake
- 2 = SA: Supply Air to inside
- 3 = RA: Room Air to be exhausted
- 4 = EA: Exhaust Air to outside

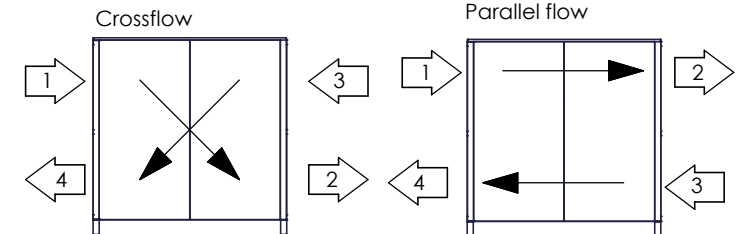
INSTALLATION ORIENTATION

Unit must be installed in orientation shown.

NOTE:

1. UNLESS OTHERWISE SPECIFIED, DIMENSIONS ARE ROUNDED TO THE NEAREST EIGHTH OF AN INCH.
2. SPECIFICATIONS MAY BE SUBJECT TO CHANGE WITHOUT NOTICE.
3. FILTERS REQUIRED ON UPSTREAM SIDE OF CORES.
4. UNIT WILL SHIP DISASSEMBLED AND REQUIRES ON-SITE ASSEMBLY.
5. DUCT WORK SUPPLIED BY OTHERS.
6. RA/EA AIRSTREAM CAN BE SWITCHED TO OA/SA AIRSTREAM. EACH AIRSTREAM IS REVERSIBLE.

AIRFLOW ORIENTATIONS (SIDE VIEW)



Performance:

Crossflow airflow orientations have best thermal performance compared to parallel flow airflow. See IOM for details.