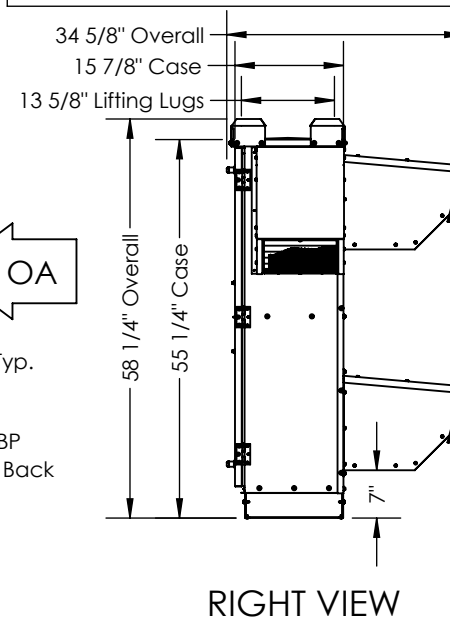
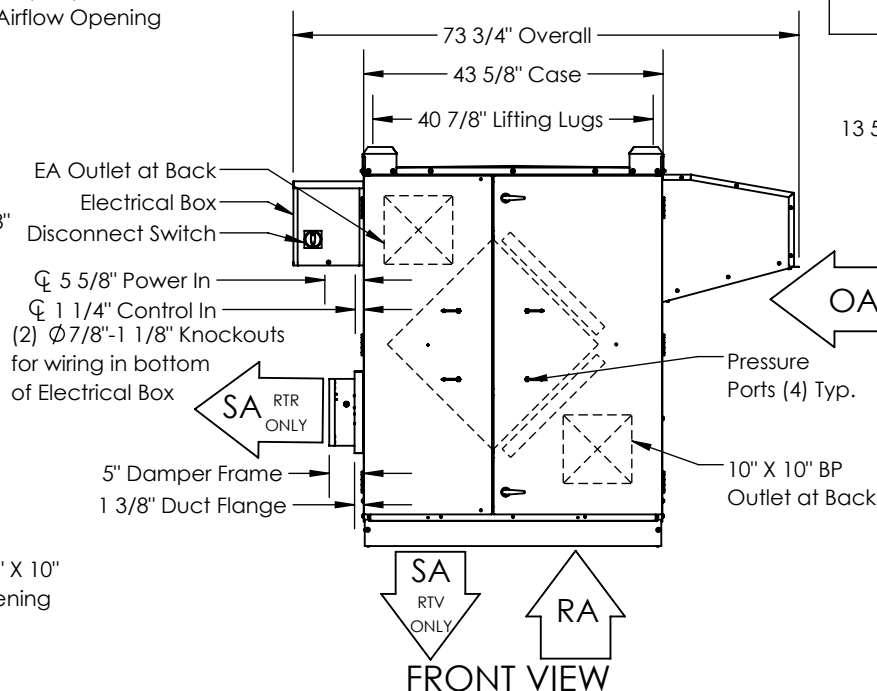
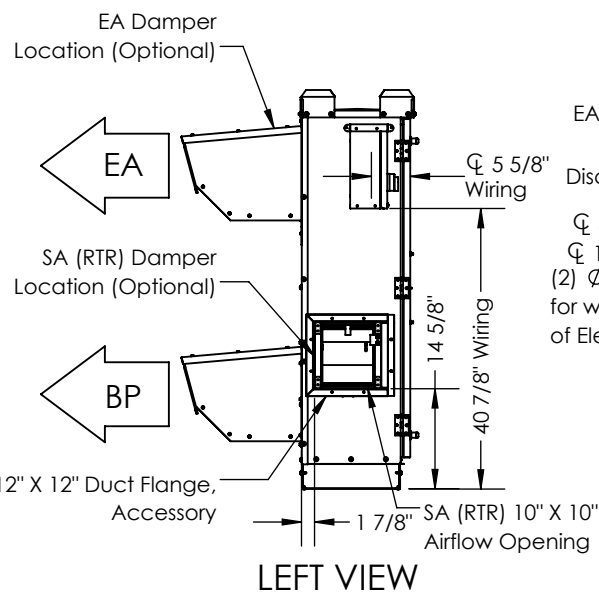
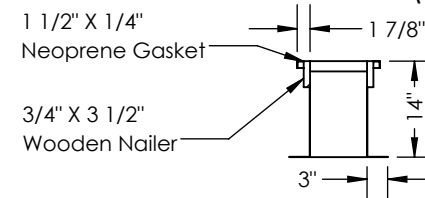


### CURB CROSS-SECTION A-A (TYP.)



### ABBREVIATIONS

EA: Exhaust Air to Outside  
 OA: Outside Air Intake  
 RA: Room Air to be Exhausted  
 SA: Supply Air to Inside  
 BP: Bypass Air Outlet  
 RTR: Rooftop Vertical RA Only  
 RTV: Rooftop Vertical RA & SA

### INSTALLATION ORIENTATION

Unit must be installed in orientation shown.

### NOTE

1. UNLESS OTHERWISE SPECIFIED, DIMENSIONS ARE ROUNDED TO THE NEAREST EIGHTH OF AN INCH.

2. SPECIFICATIONS MAY BE SUBJECT TO CHANGE WITHOUT NOTICE.