



ROOFTOP UNIT

ENERGY RECOVERY VENTILATOR  
EC MOTOR



SPECIFICATIONS



**Ventilation Type:** Static plate, heat and humidity transfer

**Airflow Range:** 166–694 CFM

**AHRI 1060 Certified Core:**  
One L85-G5

**Standard Features:**  
Non-fused disconnect  
24VAC transformer/relay package  
Cross-core differential pressure ports  
Independent blower control

**Filters:**  
Total Qty. 2, MERV 8: 14" x 20" x 2"

**Unit Weight:**  
218-373 lbs., varies by option(s)

**Max. Shipping Dimensions & Weight (on pallet):**  
60" L x 30" W x 82 1/4" H  
410 lbs.

**Motor(s):**  
Qty. 2, 170W ea., Direct drive EC motorized impeller packages (208–230V/1Ph/60Hz)

**Options:**

Qty. 2, Direct drive EC motorized impeller packages:  
357W 208–230V/1Ph/60Hz (Intermediate),  
330W 208–230V/1Ph/60Hz (Advanced),  
357W 120V/1Ph/60Hz (Advanced)

Fused disconnect  
Integrated programmable controls: enhanced, premium  
Bypass economizer damper (see DIM drawing):  
dry-bulb temperature controls (standard), enthalpy controls (option)  
Class 1 low leakage motorized isolation dampers:  
FA, EA or both airstreams  
Factory mounted filter alarms: both airstreams  
Double wall construction  
Exterior paint: white, custom colors

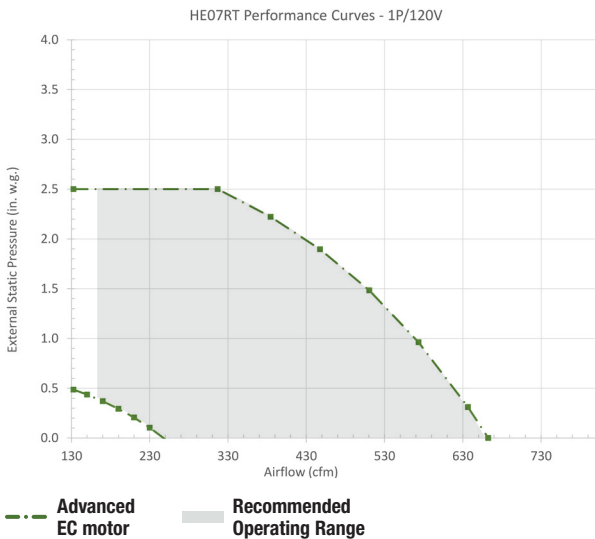
**Accessories:**

Filters: MERV 13, 2" (shipped loose)  
Backdraft damper: 10", 12"  
Automatic balancing damper: 4", 5", 6"  
Potentiometer speed control: remote installed  
Roof curb: standard 14"  
Curb wind clip  
Engineered combo curb for Trane or Carrier RTUs  
Digital time clock: wall mount (TC7D-W),  
in exterior enclosure (TC7D-E)  
Carbon dioxide sensor/control:  
wall mount (CO2-W), duct mount (CO2-D)  
IAQ sensor: wall mount (IAQ-W), duct mount (IAQ-D)  
Motion occupancy sensor/control:  
ceiling mount (MC-C), wall mount (MC-W)  
Smoke detector: duct mount (SD-D)  
BACnet fan control: wall mount (BACNETFC-W)  
Indoor electric duct heater: RH series (1–11.5 kW),  
EK series (1–175 kW)  
Indirect gas-fired duct furnace: GH series (50–400 MBH);  
Installed downstream of any fans  
HE+DX coils integrated system  
Duct flange kit: square 12" x 12", 2 flanges

Energy recovery core is AHRI Certified®



EC MOTOR OPERATING RANGE AND FAN PERFORMANCE



HE07RT MOTOR 1P/120V Options		
Airflow (CFM)	Advanced EC	
	External Static Pressure (Inches Water Column)	Unit Power Consumption (Watts)
133	2.50	485
317	2.50	658
385	2.22	717
448	1.90	767
511	1.48	808
573	0.96	840
636	0.31	860
662	0.00	865

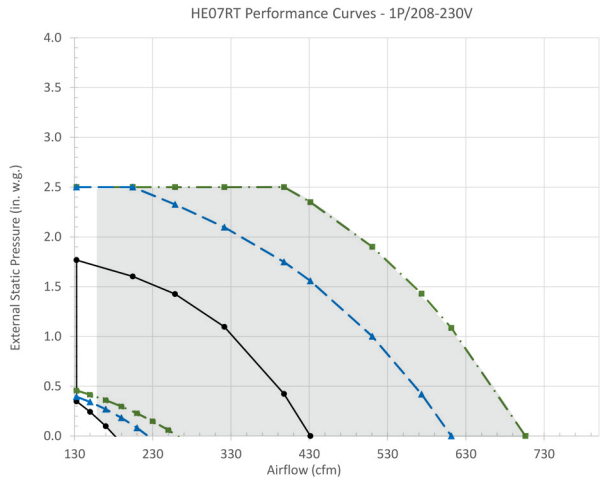
**Note:** Airflow performance includes effect of clean, standard filter supplied with unit.



ENERGY RECOVERY VENTILATOR  
EC MOTOR



EC MOTOR OPERATING RANGE AND FAN PERFORMANCE



— Standard EC motor   
 - - - Intermediate EC motor   
 - - - Advanced EC motor  
 Recommended Operating Range

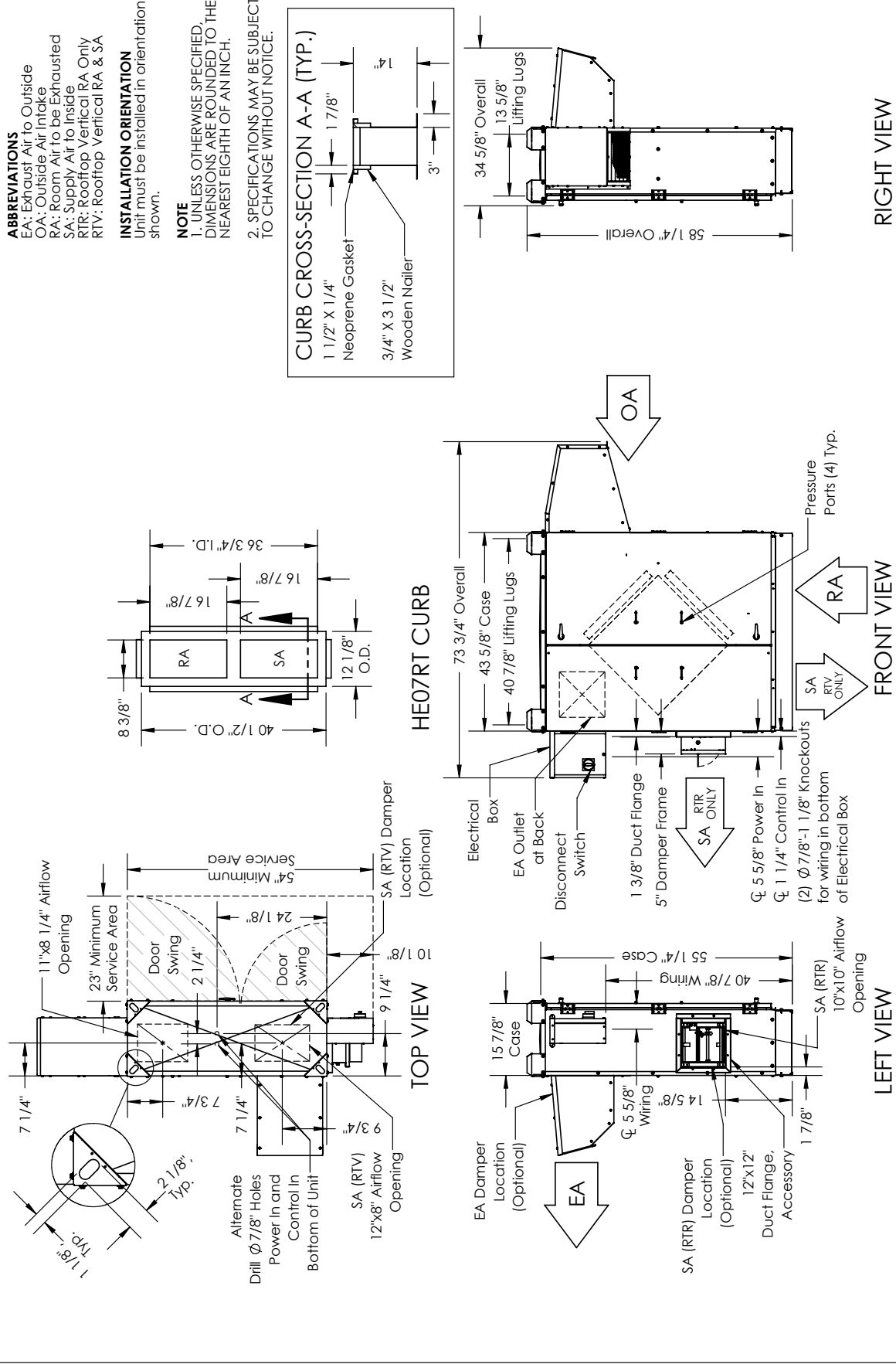
HE07RT MOTOR 1P/208-230V Options						
Airflow (CFM)	Standard EC		Intermediate EC		Advanced EC	
	External Static Pressure (Inches Water Column)	Unit Power Consumption (Watts)	External Static Pressure (Inches Water Column)	Unit Power Consumption (Watts)	External Static Pressure (Inches Water Column)	Unit Power Consumption (Watts)
133	1.77	265	2.50	356	2.50	354
204	1.60	310	2.50	465	2.50	444
259	1.43	342	2.33	514	2.50	516
322	1.10	371	2.10	568	2.50	609
398	0.42	388	1.75	626	2.50	743
431	0.00	387	1.56	647	2.35	772
511			1.00	683	1.90	823
573			0.42	694	1.43	844
611			0.00	691	1.09	846
706					0.00	811

**Note:** Airflow performance includes effect of clean, standard filter supplied with unit.

ELECTRICAL DATA

Option	Watts	Volts	Hz	Phase	FLA per motor	Min. Cir. Amps	Max. Overcurrent Protection Device
[EE] Standard	170	208-230	60	Single	1.16	2.6	15
[BB] Intermediate	357	208-230	60	Single	2.76	6.2	15
[AA] Advanced	330	208-230	60	Single	1.55	3.5	15
	357	120	60	Single	5.4	12.2	15

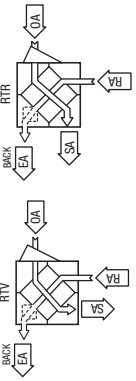
**HE07RT (RTV/RTR) ENERGY RECOVERY VENTILATOR EC MOTOR**



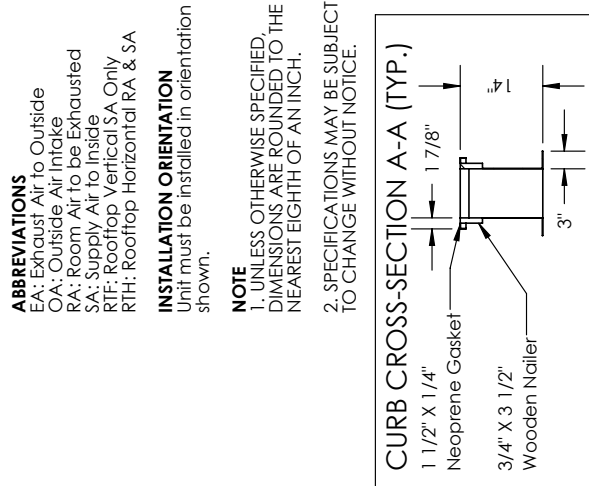
**UNIT MOUNTING & APPLICATION**  
 Must be mounted as shown. Airstreams cannot be switched.



**AIRFLOW ORIENTATION**  
 Available as shown:



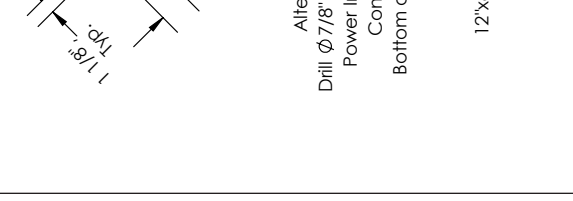
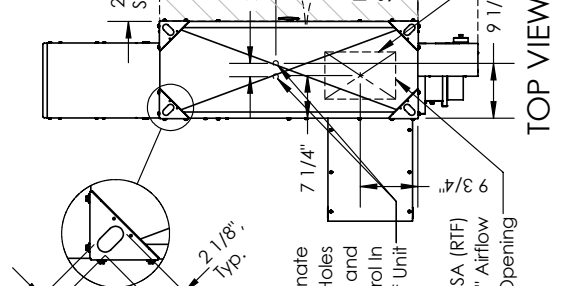
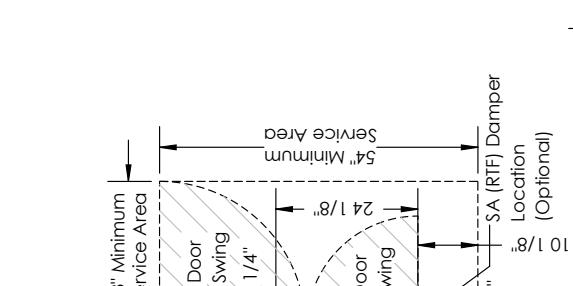
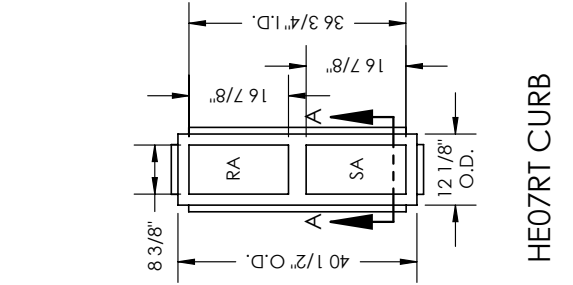
**HE07RT (RTH/RTF) ENERGY RECOVERY VENTILATOR EC MOTOR**



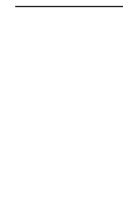
**ABBREVIATIONS**  
 EA: Exhaust Air to Outside  
 OA: Outside Air Intake  
 RA: Room Air to be Exhausted  
 SA: Supply Air to Inside  
 RTF: Rooftop Vertical SA Only  
 RTH: Rooftop Horizontal RA & SA

**INSTALLATION ORIENTATION**  
 Unit must be installed in orientation shown.

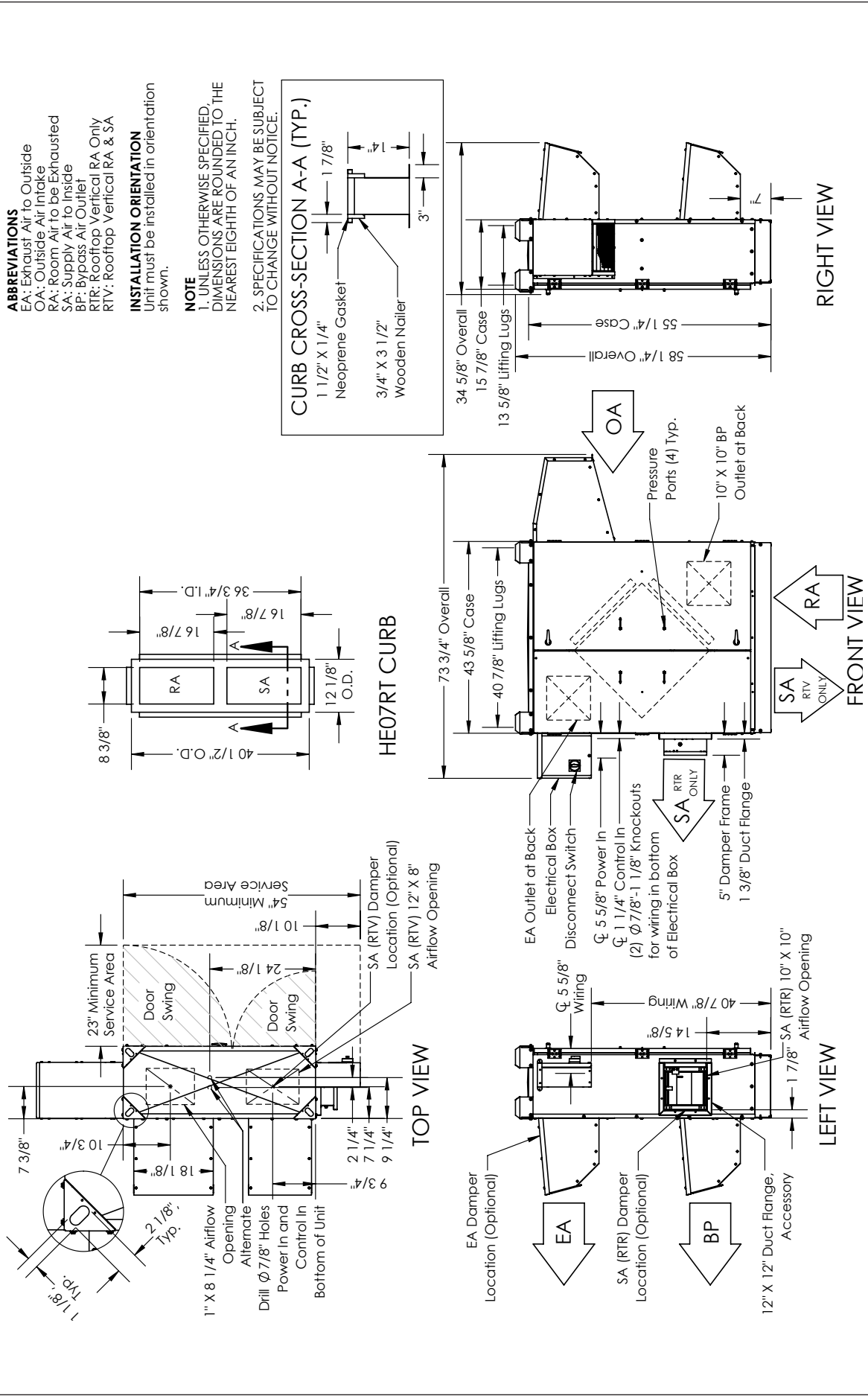
**NOTE**  
 1. UNLESS OTHERWISE SPECIFIED, DIMENSIONS ARE ROUNDED TO THE NEAREST EIGHTH OF AN INCH.  
 2. SPECIFICATIONS MAY BE SUBJECT TO CHANGE WITHOUT NOTICE.



**UNIT MOUNTING & APPLICATION**  
 Must be mounted as shown. Airstreams cannot be switched.



**HE07RT (RTV/RTR) ENERGY RECOVERY VENTILATOR EC MOTOR WITH BYPASS ECONOMIZER**



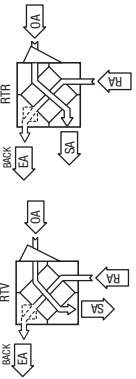
**UNIT MOUNTING & APPLICATION**



Must be mounted as shown. Airstreams cannot be switched.

**AIRFLOW ORIENTATION**

Available as shown:

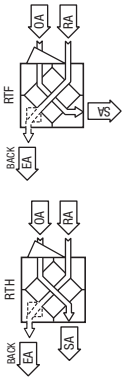
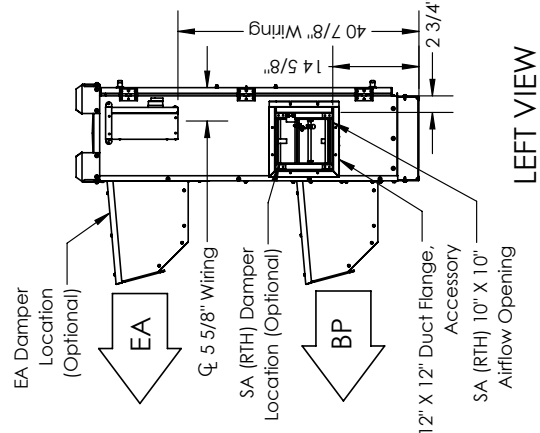
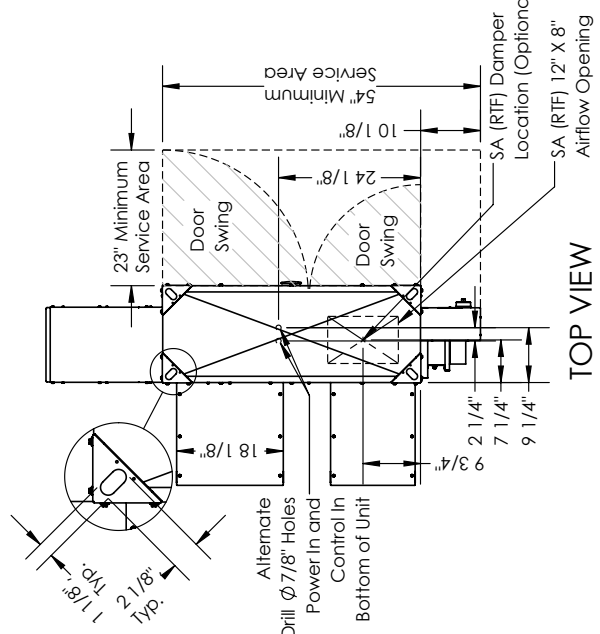
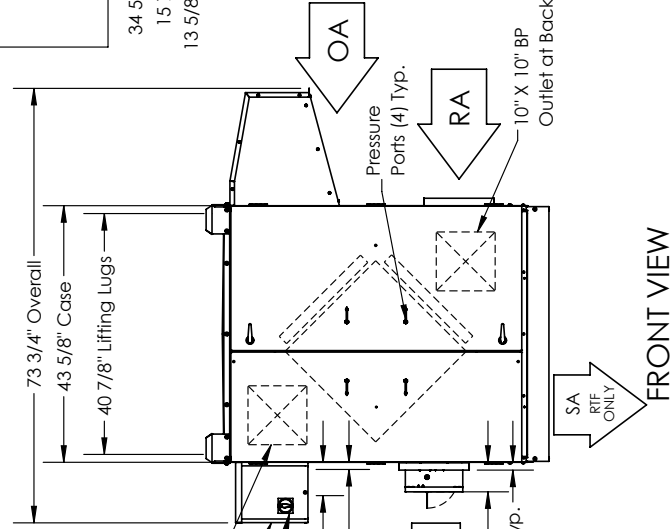
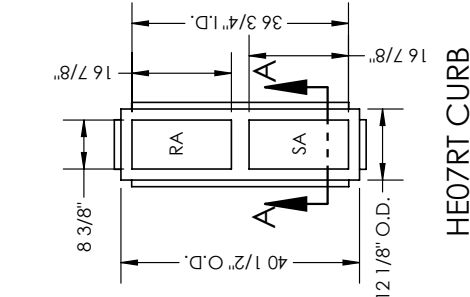
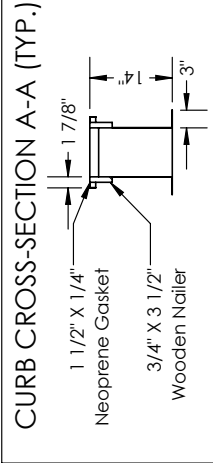


**HE07RT (RTH/RTF) ENERGY RECOVERY VENTILATOR EC MOTOR WITH BYPASS ECONOMIZER**

**ABBREVIATIONS**  
 EA: Exhaust Air to Outside  
 OA: Outside Air Intake  
 RA: Room Air to be Exhausted  
 SA: Supply Air to Inside  
 BP: Bypass Air Outlet  
 RTF: Rooftop Vertical SA Only  
 RTH: Rooftop Horizontal RA & SA

**INSTALLATION ORIENTATION**  
 Unit must be installed in orientation shown.

**NOTE**  
 1. UNLESS OTHERWISE SPECIFIED, DIMENSIONS ARE ROUNDED TO THE NEAREST EIGHTH OF AN INCH.  
 2. SPECIFICATIONS MAY BE SUBJECT TO CHANGE WITHOUT NOTICE.



**UNIT MOUNTING & APPLICATION**  
 Must be mounted as shown. Airstreams cannot be switched.

